

Capability Statement

A Veteran-Owned Land Surveying Firm

Company Overview



Maven Mapping Solutions (Maven) is a veteran-owned land surveying firm specializing in advanced technology solutions for infrastructure mapping and design projects across the Pacific Northwest. Founded in 2025 by three Professional Land Surveyors with over 60 years of combined experience, we provide high-precision mapping services tailored to meet the evolving needs of our clients.

Emerging from a shared vision to modernize the land surveying industry, Maven integrates traditional expertise with advanced remote sensing technologies. We offer terrestrial and aerial LiDAR, drone photogrammetry, and advanced 3D modeling services that enable us to capture data with improved accuracy, detail, and efficiency.

With strategic locations in Buckley, WA, Beaverton, OR, and Meridian, ID,

we maintain strong regional coverage and in-depth knowledge of each state's regulatory landscape.

We support a wide range of projects, including infrastructure improvements, public works, commercial developments, and property transactions requiring comprehensive data collection. Our field-to-finish mapping approach and remote sensing expertise make us a trusted partner for solving complex surveying challenges such as navigating dense vegetation, capturing intricate infrastructure, or producing high-resolution 3D models for engineering applications.

At Maven, we unite decades of experience with innovative technology to deliver accurate, timely, and cost-effective results that empower our clients to move from planning to execution with confidence.

Markets We Serve



Government



Transportation



Commercial



Industrial



Natural Resources



Residential



Design-Build



Title & Legal

Certifications & Qualifications

- **VOSB** (SBA Veteran-Owned Small Business – Federal)
- **VOB** (Veteran-Owned Business – Washington) (**WDVAMMSL25**)
- **SBE** (Small Business Enterprise – Washington) (**S000030301**)
- **PWSBE** (Public Works Small-Business Enterprise – Washington) (**P000030301**)
- **COBID VBE** (Veteran Business Enterprise – Oregon) (**15510**)
- King County Small Business Contractor & Supplier (Washington) (**6801**)
- Professional Land Surveyor Licenses in Washington, Oregon, and Idaho
- FAA Part 107 Licensed Drone Pilots



Our Team

Leadership Built on Expertise

Each of our principals contributes unique expertise while sharing a common vision: transforming land surveying through advanced technology and exceptional service.



Jesse White, PLS (OR, WA, AZ, ID)

Owner | OR Director

Jesse has over 25 years of experience and leads remote sensing operations. He has specialized expertise in boundary resolution, legal descriptions, and advanced data collection. His background includes cadastral surveys, industrial facilities, transportation infrastructure, and site development. Jesse is highly skilled in terrestrial and aerial LiDAR applications and leverages his expertise in AutoCAD, Trimble Business Center, and Bentley OpenRoads to deliver sophisticated modeling solutions for complex projects.



Erik Van Buskirk, PLS (ID, WA)

Owner | ID Director

Erik has over 30 years of surveying experience focused on transportation and infrastructure projects throughout the Pacific Northwest. He oversees business operations, client relationships, and quality control processes. His expertise spans topographic mapping, boundary resolution, utility surveying, legal descriptions, 3D laser scanning, and construction layout. Erik's proven management skills and technical competence ensure consistent, high-quality deliverables on every project.



Branden Bowie, PLS (WA)

Owner | WA Director

Branden has over 15 years of surveying experience, with a decade dedicated to terrestrial LiDAR, 3D laser scanning, and digital modeling. His background spans cadastral surveys, industrial applications, transportation corridors, industrial sites, and land development. Branden delivers sophisticated CAD and Bentley MicroStation InRoads models that integrate seamlessly with client design workflows. His technical proficiency provides clients with advanced data collection and modeling solutions that enhance planning and design accuracy.

Technical Advantage

Maven maintains a strategic investment in advanced equipment and software that places us at the forefront of surveying technology.

Advanced Data Collection Systems

Our carefully curated technology arsenal includes advanced equipment specifically selected to address the most challenging surveying scenarios:

- **High-Performance Terrestrial LiDAR** – The Trimble X9 Laser Scanner captures up to 2 million points per second with millimeter-level accuracy and range exceeding 300m. This technology creates comprehensive digital records of complex environments in a fraction of the time required by conventional methods.
- **Robotic Total Station Systems** – The Trimble SX12 combines precision mechanical measurement with scanning capabilities, enabling simultaneous data collection that traditional methods would require multiple setups to achieve.
- **Aerial LiDAR Solutions** – Our drone fleet includes several options, depending on the project requirements:
 - FreeFly Astro Max (NDAA Compliant) w/ LR1 LiDAR unit and Sony LR1
 - DJI M350 RTK w/ Zenmuse L-2 LiDAR unit
 - DJI Mavic 3E w/ RTK
 - DJI Matrice 4E

Each of these enables rapid aerial mapping while penetrating densely vegetated areas to capture true ground surfaces.

- **Advanced GNSS Technology** – Trimble R12i GPS systems employ the latest multi-constellation satellite technology with interference mitigation, providing centimeter-level accuracy.

The Right Tool for Every Challenge

Each surveying project presents unique challenges requiring different technological approaches. Our principals' extensive field experience guides technology selection based on site conditions, project requirements, and deliverable specifications.

Maven maintains expertise across multiple collection methodologies:

- **Conventional Surveying** for high-precision control and specific measurements.
- **Terrestrial Laser Scanning** for detailed infrastructure documentation.
- **Aerial LiDAR** for efficient larger-area mapping with ground penetration.
- **Drone Photogrammetry** for visual documentation and orthoimagery.
- **Mobile Mapping** for efficient corridor data collection using certified third-party specialists.

Integrated Software Ecosystem

Our software tools work together to turn raw field data into valuable project deliverables while maintaining data integrity at every step:

- **Trimble Business Center** – Central hub for processing all survey data.
- **AutoCAD Civil 3D** – Creates detailed design models that engineers can use immediately.
- **Bentley MicroStation** – Specialized software for highway and transportation projects.
- **DJI Terra** – Transforms drone imagery into measurable maps and 3D models.
- **Agisoft MetaShape Pro** - Converts drone and ground-based photogrammetric data into detailed 3D models and point clouds.

Our Services

Topographic Survey

Documenting natural and cultural features, improvements, and terrain characteristics tied to survey reference points.

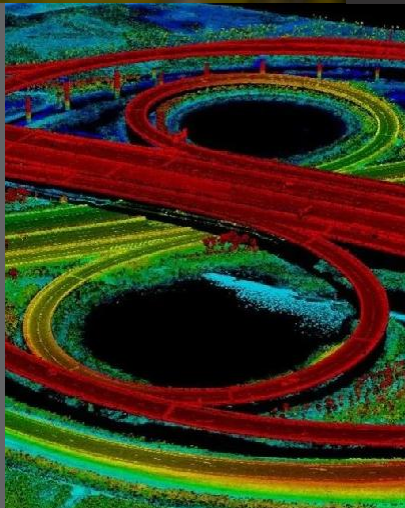


UAS/Drone Mapping

Efficient aerial data collection producing orthomosaics, digital elevation models, and 3D models across large areas with high detail.

3D Scanning & Modeling

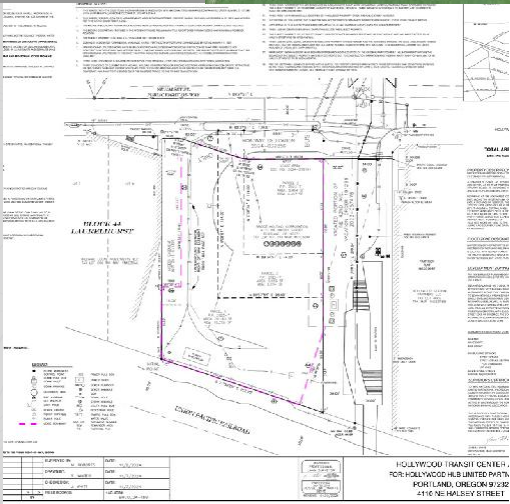
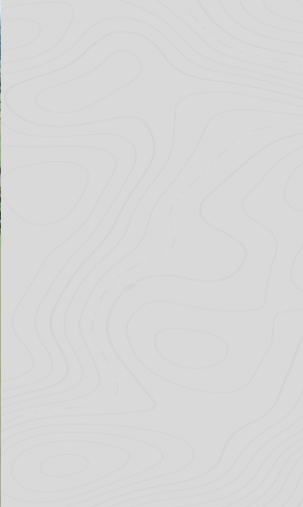
LiDAR scanning to map and model areas or objects in high detail, creating the foundation for advanced design applications.



Maven offers comprehensive professional land surveying services that leverage advanced technology to deliver superior results for infrastructure, development, and property projects.

Boundary Surveys & Property Line Adjustment

Locating boundary monumentation and measuring relationships to retrace deed descriptions. Property Line Adjustments modify lot boundaries to reflect current owner needs.



ALTA/NSPS Land Title Surveys

Comprehensive surveys documenting boundaries, physical features, encumbrances, easements, and mortgages according to national standards.

Plats & Subdivisions

Land division from partition plats (3-4 parcels) to full subdivisions with infrastructure improvements, meeting all state and local regulations.





PROUDLY SERVING

Washington State

Oregon State

Idaho State

Contact Us

Maven Mapping Solutions LLC

Washington Office – (253) 334-5163

Oregon Office – (970) 590-0321

Idaho Office – (206) 817-2280

info@maven-mapping.com

www.MavenMappingSolutions.com

SAM.gov Registered & Active

UEI: M8TYLWLDHA29

CAGE: 10V38

NAICS: 541370 – Land Surveying Services